

CE  
21  
Hilti AG FL-9494 Schaan  
Hilti-DX-DoP-008  
ETA-20/1042  
EAD 333037-00-0602  
0672  
Threaded studs for connection  
of materials to structural steel



BUREAU  
VERITAS



DNV.COM/AF

Lloyd's Register  
TYPE APPROVED

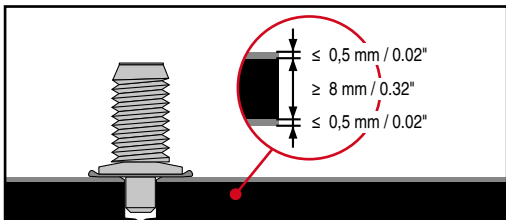


Hilti  
Corrosion  
handbook /  
DFTM

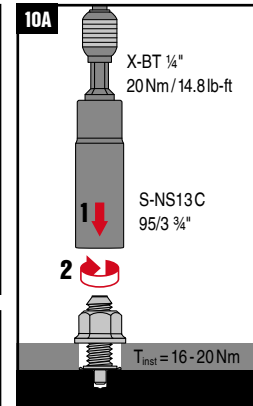
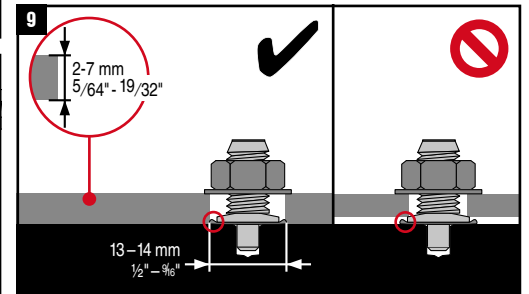
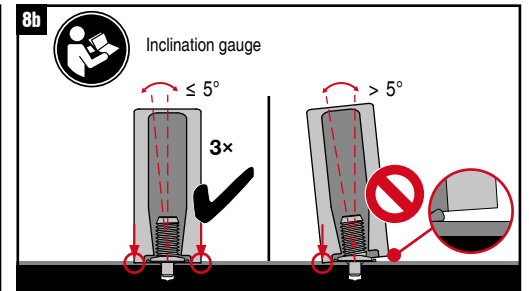
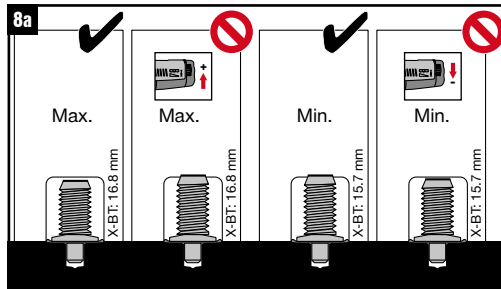
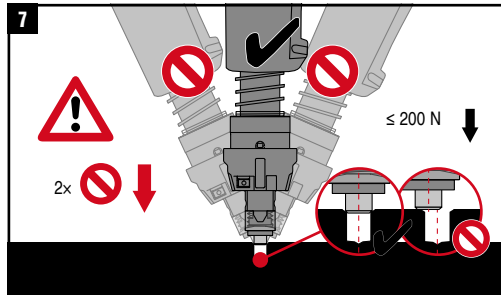
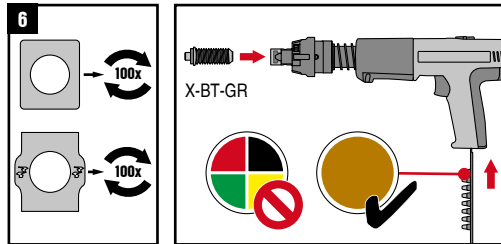
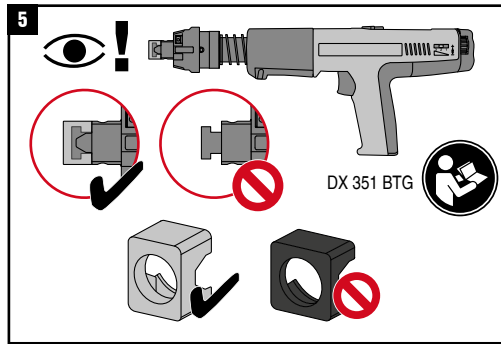
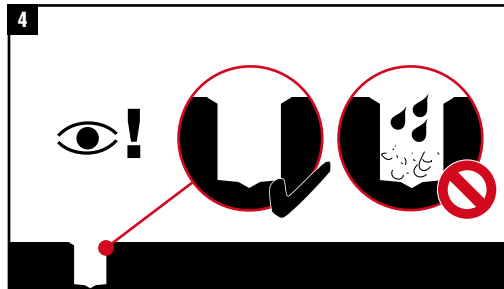
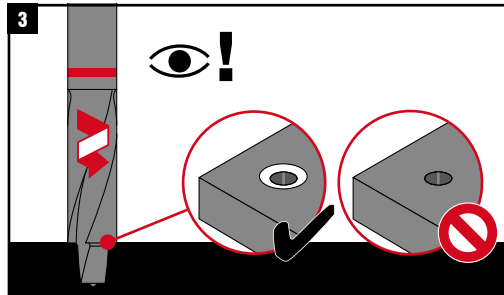
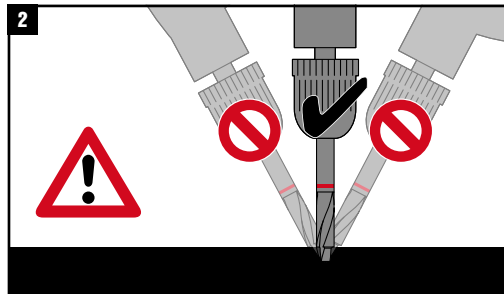
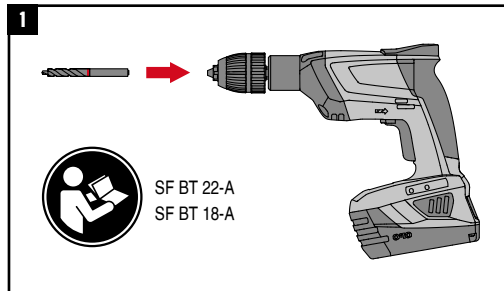


A4  
316

Equivalent  
Corrosion  
Resistance



		Use with					
X-BT-GR M8/7 SN 8	✓	SF BT 22-A SF BT 18-A	DX 351 BTG	X-BT 1/4 - 20Nm/14,8 ft lb	Flange Nut M8	S-NS 13 C 95/3 3/4"	X-IG BT M8



10B

SF 6-A22	1	5
SF 6H-A22	1	5
SF 10W-A22	4	11
SF 8M-A22	4	11
SFC 14-A	2	11
SFC 22-A	2	11

T<sub>inst</sub> = 16-20 Nm

CE  
21  
Hilti AG FL-9494 Schaan  
Hilti-DX-DoP-008  
ETA-20/1042  
EAD 333037-00-0602  
0672  
Threaded studs for connection  
of materials to structural steel



BUREAU  
VERITAS



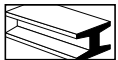
DNV.COM/AF



Lloyd's  
Register  
TYPE  
APPROVED

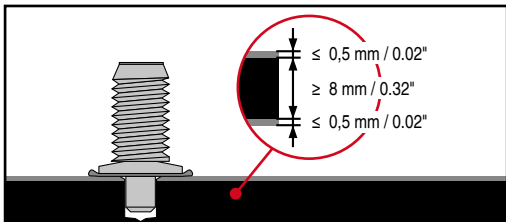


ABS  
TYPE APPROVED PRODUCT

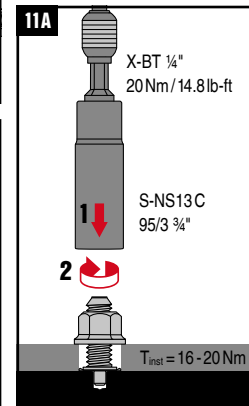
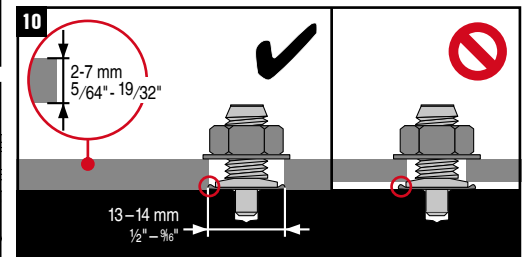
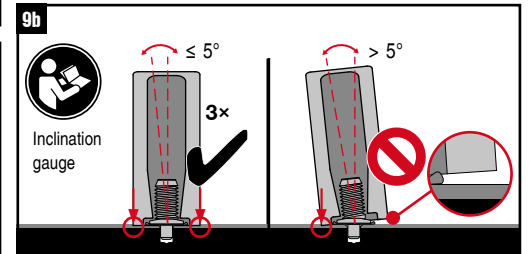
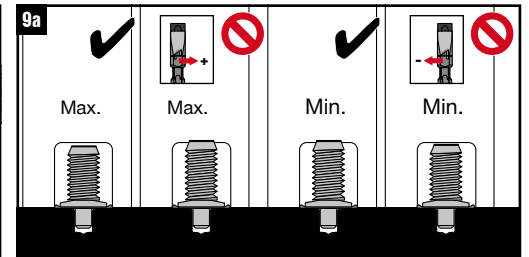
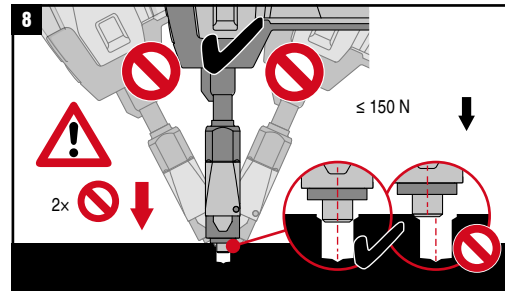
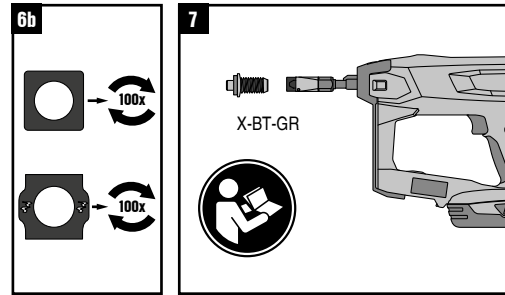
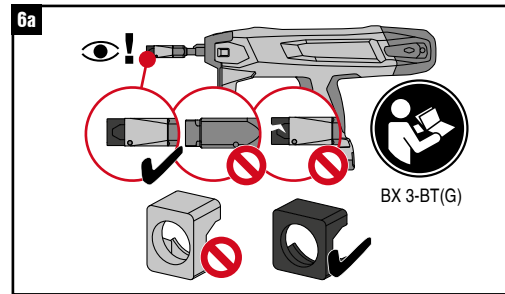
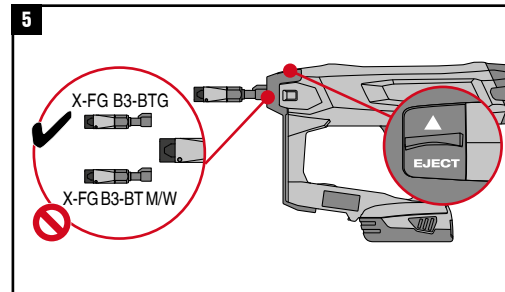
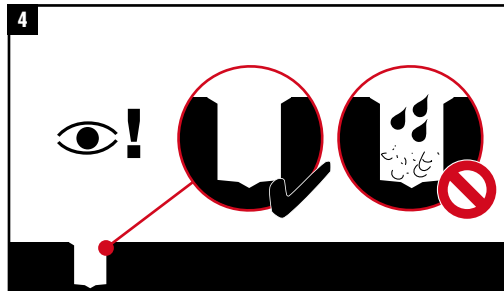
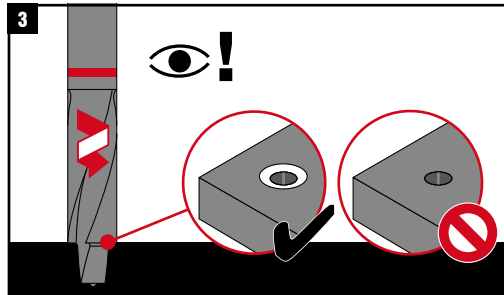
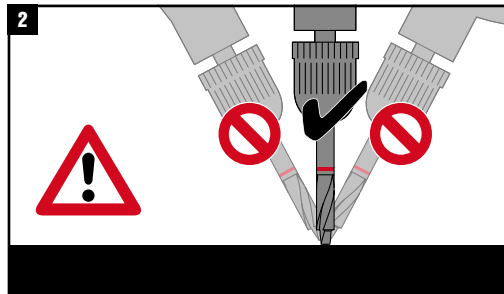
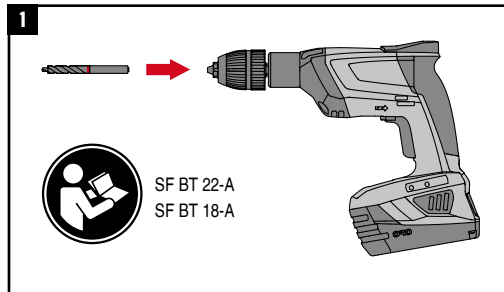


A4  
316

Equivalent  
Corrosion  
Resistance



		Use with					
X-BT-GR M8/7 SN 8	✓	SF BT 22-A SF BT 18-A	BX 3-BT (G)	X-BT 1/4" - 20Nm/14.8 ft lb	Flange Nut M8	S-NS 13 C 95/3 3/4"	X-IG BT M8



**11B**

	1	5
	1	5
	4	11
	4	11
	2	11
	2	11

T<sub>inst</sub> = 16-20Nm