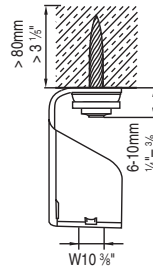
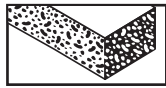


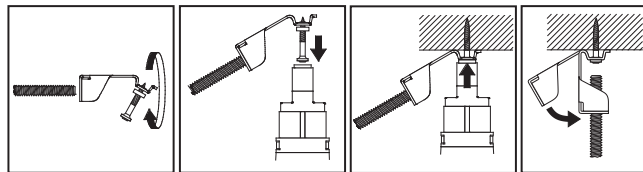
X-HS W10 U32 P8 S15 # 401234



für/for/pour-
DX 460 F8
DX 351 F8
DX 36



401410



Suitable for indoor use in other than wet locations.
Cat. No. X-HS W10 U32 P8 S15 installed in 4000 psi to 6000 psi concrete is suitable for support of maximum 2 inch Trade Size EMT, RMC and IMC and 3 inch Trade Size Rigid PVC conduit on maximum 10 ft. spacing.
Cat. No. X-HS W10 U32 P8 S15 installed in 2000 psi to 3999 psi concrete is suitable for support of maximum 3/4 inch Trade Size EMT, RMC and IMC and Rigid PVC conduit.

